

The examples of the paintings and colour palettes in particular apartments

The idea leading to the design is based on the Art Pieces stationing in the Hotel Tyssedal. To show connections between the main building of the hotel and the apartments in the old shop, replicas of the chosen paintings will be the source of colour palettes in apartments. It is planned to name every room with the name of the painting. As the few art pieces are landscapes, using them make a bond between the nature, culture and heritage.



Characteristic materials of Norway

Norway is mostly known from its landscapes. The fjords are the combination between the beauty of high mountains made of slate covered with greenery and clarity of wide spaces of water. That is why Norwegian people are not used to building with concrete, but instead integrating architecture with environment. To the most characteristic materials we may include the wood, stone and glass in different variations.

Norwegian representation

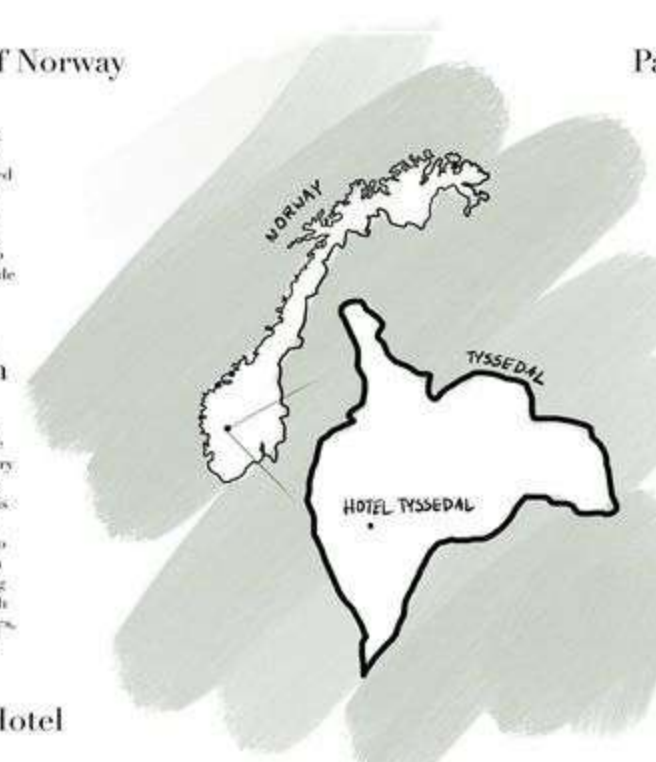
Norway is known not only from its beautiful landscapes and peaceful living, all around the world Norwegian people represent their country in different fields. Norway is known from its athletes and artists. Till today Edvard Munch is one of the most recognisable artists in the world. Grimstad stories of Jo Nesbo belongs to the most readable in the world. In the design area, Snøhetta Group is representative among the Norwegian architects. Elisabeth von Krogh is worldwide known from her works in ceramics, as well as Ellen Grieg in manufacturing the fabrics.

History of The Tyssedal Hotel

Tyssedal Hotel has its opening back in May 16, 1912. It is managed till today as not only the hotel but also the Art Gallery full of the pieces of Christian Krogh, Morten Muller, Hans Dahl or even Edvard Munch.

Patterns and colours of Norway

Norway has its specific heritage that can be an amazing inspiration to the design. Cross-stitch is commonly used in accessories such as blankets, rugs and drapes. The patterns of knitted definition of traditional Norwegian outfit, not only its shapes, but also colours can create the base for interior design. Colours overall make a great significance in norwegian tradition. The houses in Norway were painted according to the material status of the owner. Red paint was the cheapest and usually used by the fishermen. Yellow or orange houses belong to the craftsmen and wealthier merchants. White paint was the most expensive one and it was the signal of wealth.



History of Tyssedal

Real transformation and creation of the town Tyssedal happened in the second half of XIX century when the hydropower of Tyssø waterfall has been discovered. The surroundings and landscape of Tyssedal is very calm and peaceful, the architecture is composing with the nature creating the place attractive for the visitors. One of the most interesting aspects is The Norwegian Museum of Hydropower and Industry, showing the industrial roots of the town Tyssedal. Many of the buildings throughout the history belong to the industrial factories Norsk Hydro and despite the fact that most of them no longer exists, its impact on the Tyssedal architecture is still visible.

Characteristic colours in design



RZUT PIWNICY
BASEMENT PLAN



RZUT PARTERU
FIRST FLOOR PLAN



RZUT PIĘTRA
SECOND FLOOR PLAN

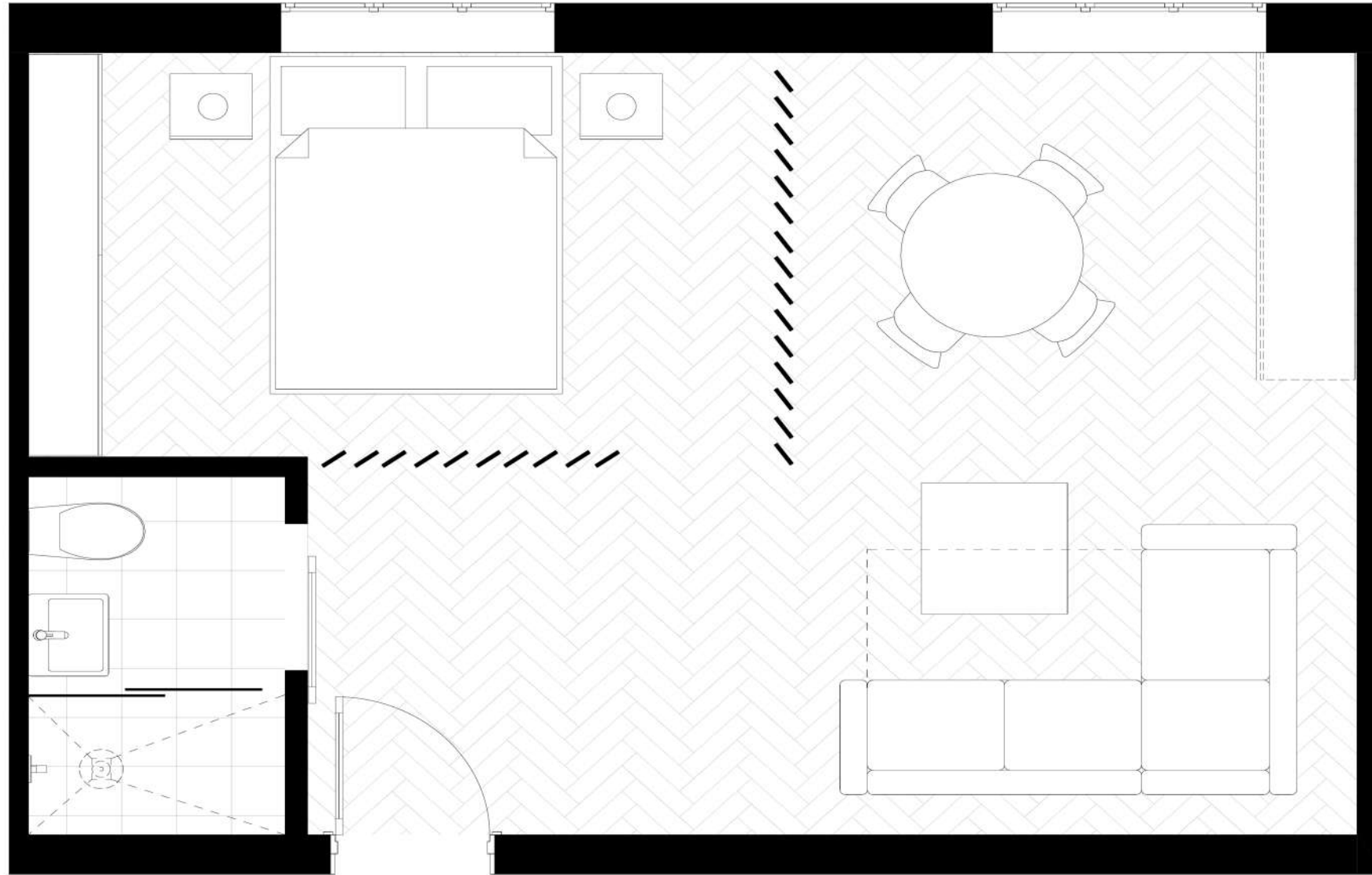


RZUT PODDASZA
ATTIC PLAN



Projekt "Space for Integration – Nature, Heritage, People" korzysta z dofinansowania o wartości 115 695,00 euro otrzymanego od Islandii, Liechtensteinu i Norwegii w ramach Funduszy EOG. Celem projektu NHP Space jest rozwijanie edukacji sprzyjającej włączeniu społecznemu.

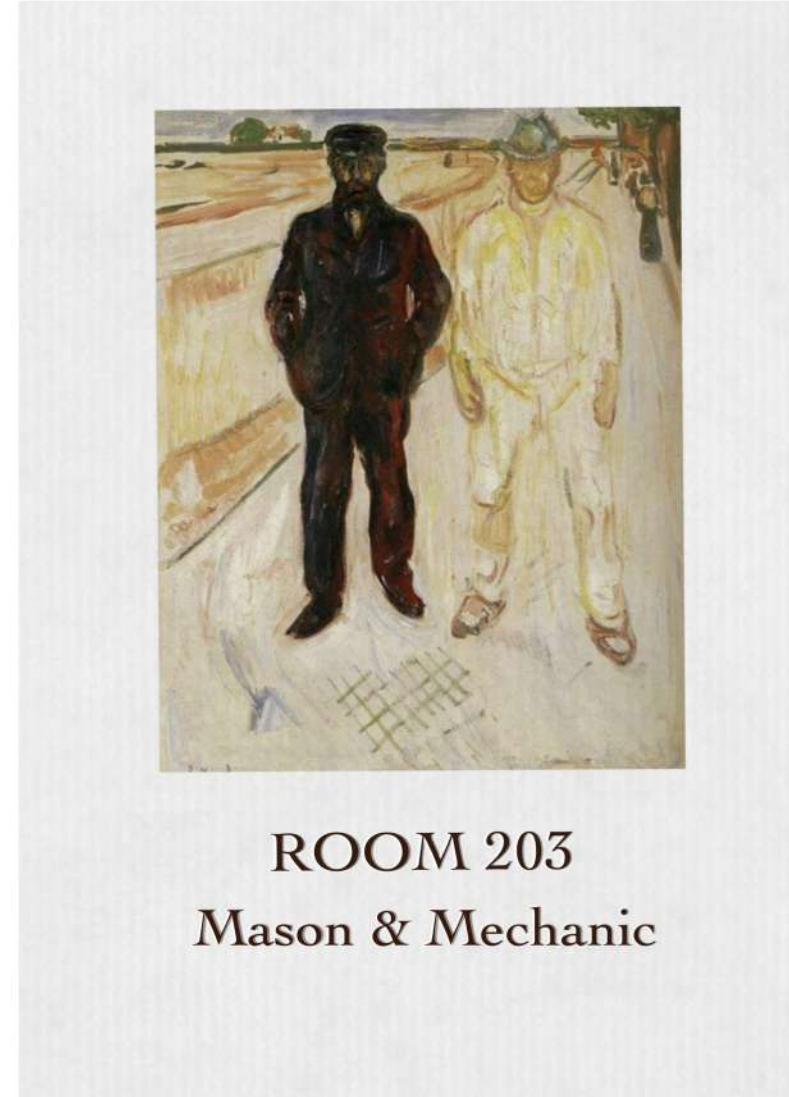
RZUT APARTAMENTU
APARTMENT PLAN



WIZUALIZACJA SYPIALNI
BEDROOM VISUALISATION



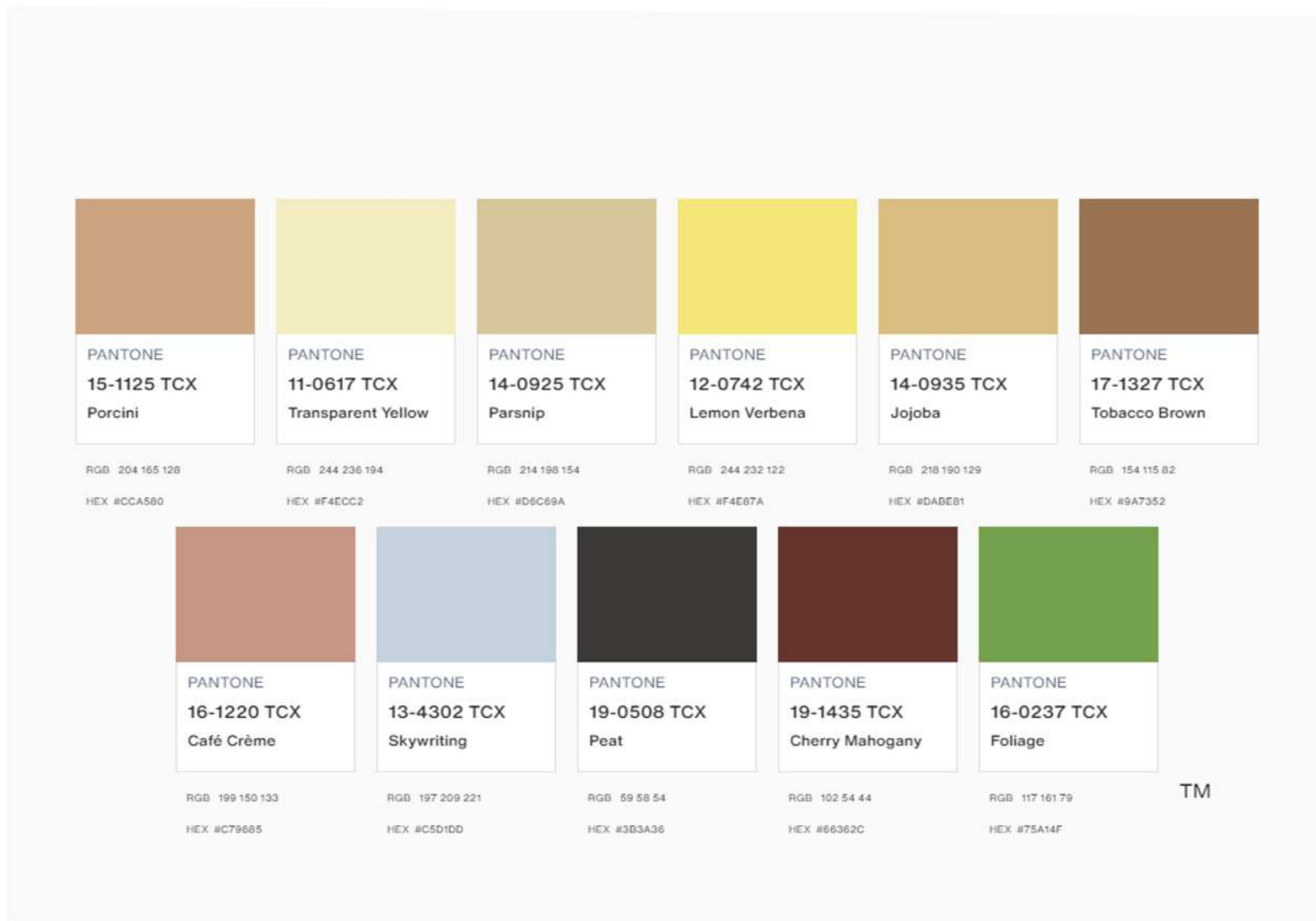
KLUCZ DO POKOJU
KEYCARD LOCK



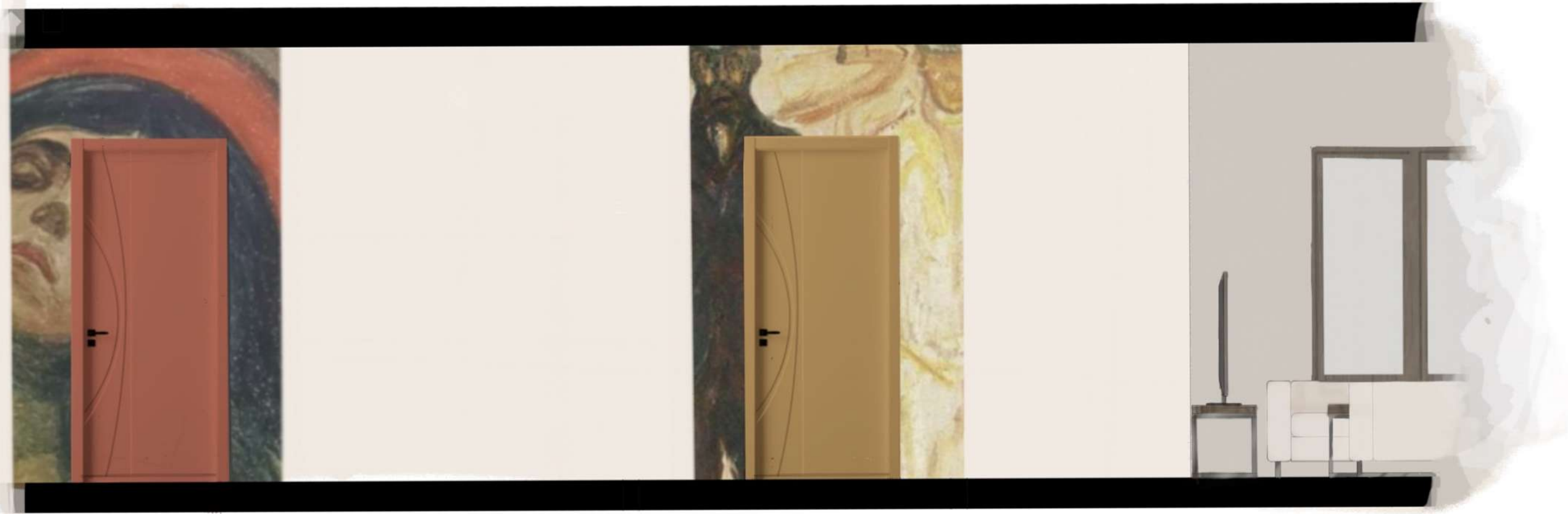
WIZUALIZACJA APARTAMENTU
APARTMENT VISUALISATION



PALETA KOLORÓW Z OBRAZU
COLOR PALETTE FROM THE PAINTING



ROZWINIĘCIE ŚCIANY KORYTARZA
CORRIDOR WALL



WIZUALIZACJA RECEPCJI
RECEPTION VISUALISATION



PRZEKRÓJ
SECTION

