

# TYSSSED’ ART

MAŁGORZATA CYGAN, ALEKSANDRA DZIADZIO, WIKTORIA GRĘDA, ARTUR TOMASZEK, MELANIA ZAJĄCZEK

Projekt „Space for Integration – Nature, Heritage, People” korzysta z dofinansowania o wartości 115 695,00 euro otrzymanego od Islandii, Liechtensteinu i Norwegii w ramach Funduszy EOG. Celem projektu NHP Space jest rozwijanie edukacji sprzyjającej włączeniu społecznemu.

# Characteristic materials of Norway

---

Norway is mostly known from its landscapes. The fjords are the combination between the beauty of high mountains made of slate covered with greenery and clarity of wide spaces of water. That is why Norwegian people are not used to building with concrete, but instead integrating architecture with environment. To the most characteristic materials we may include the wood, stones and glass in different variations.

# Norwegian representation

---

Norway is known not only from its beautiful landscapes and peaceful living, all around the world Norwegian people represent their country in different fields. Norway is known from its athletes and artists. Till today Edvard Munch is one of the most recognisable artists in the world. Criminal stories of Jo Nesbø belongs to the most readable in the world. In the design area, Snøhetta Group is representative among the Norwegian architects. Elisabeth von Krogh is worldwide known from her works in ceramics, as well as Ellen Grieg in manufacturing the fabrics.

# History of The Tyssedal Hotel

---

Tyssedal Hotel has its opening back in May 16, 1912. It is managed till today as not only the hotel but also the Art Gallery full of the pieces of Christian Krogh, Morten Muller, Hans Dahl or even Edvard Munch.

# Patterns and colours of Norway

---

Norway has its specific heritage that can be an amazing inspiration to the design. Cross-stitch is commonly used in accessories such as blankets, rugs and drapes. The patterns of bunader (definition of traditional Norwegian outfit) not only by its shapes, but also colours can create the base for interior design. Colours overall make a great significance in norwegian tradition. The houses in Norway were painted according to the material status of the owner. Red paint was the cheapest and usually used by the fishermen. Yellow or orange houses belong to the craftsmen and wealthier merchants. White paint was the most expensive one and it was the signal of wealth.



# History of Tyssedal

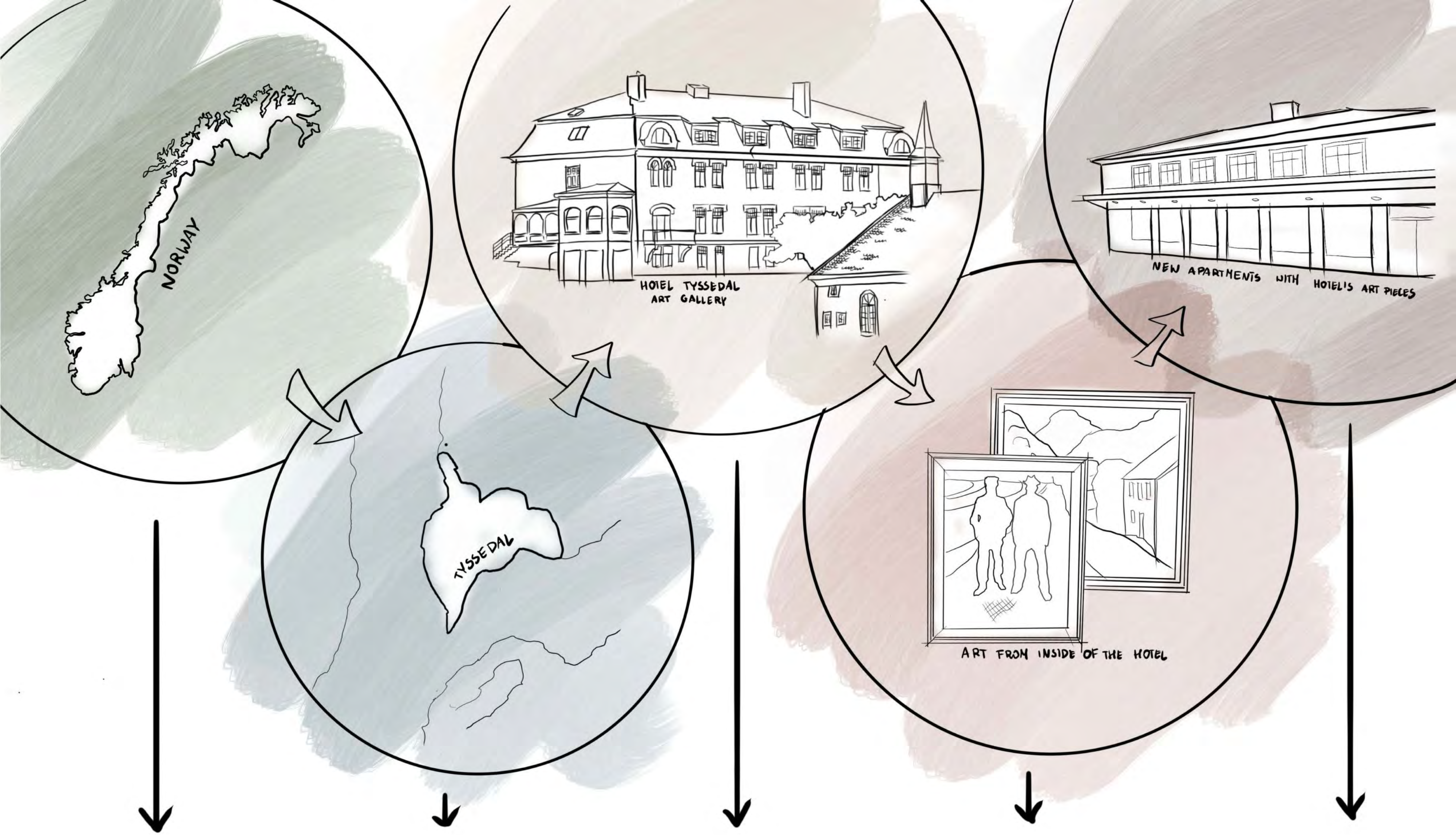
---

Real transformation and creation of the town Tyssedal happened in the second half of XIX century when the hydropower of Tysso waterfall has been discovered. The surroundings and landscape of Tyssedal is very calm and peaceful, the architecture is composing with the nature creating the place attractive for the visitors. One of the most interesting aspects is The Norwegian Museum of Hydropower and Industry, showing the industrial roots of the town Tyssedal. Many of the buildings throughout the history belong to the industrial factories Norsk Hydro and despite the fact that most of them no longer exists, its impact on the Tyssedal architecture is still visible.

# Characteristic colours in design

---





Norwegian heritage,  
nature and culture

History of Tyssedal and  
its landscape.  
Characteristic natural  
materials

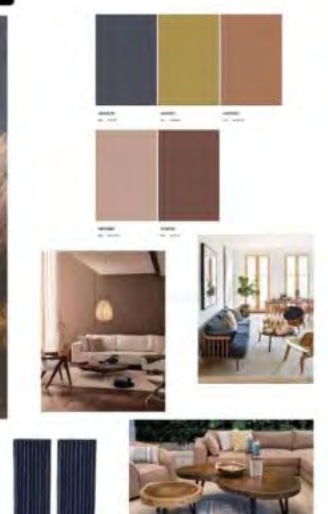
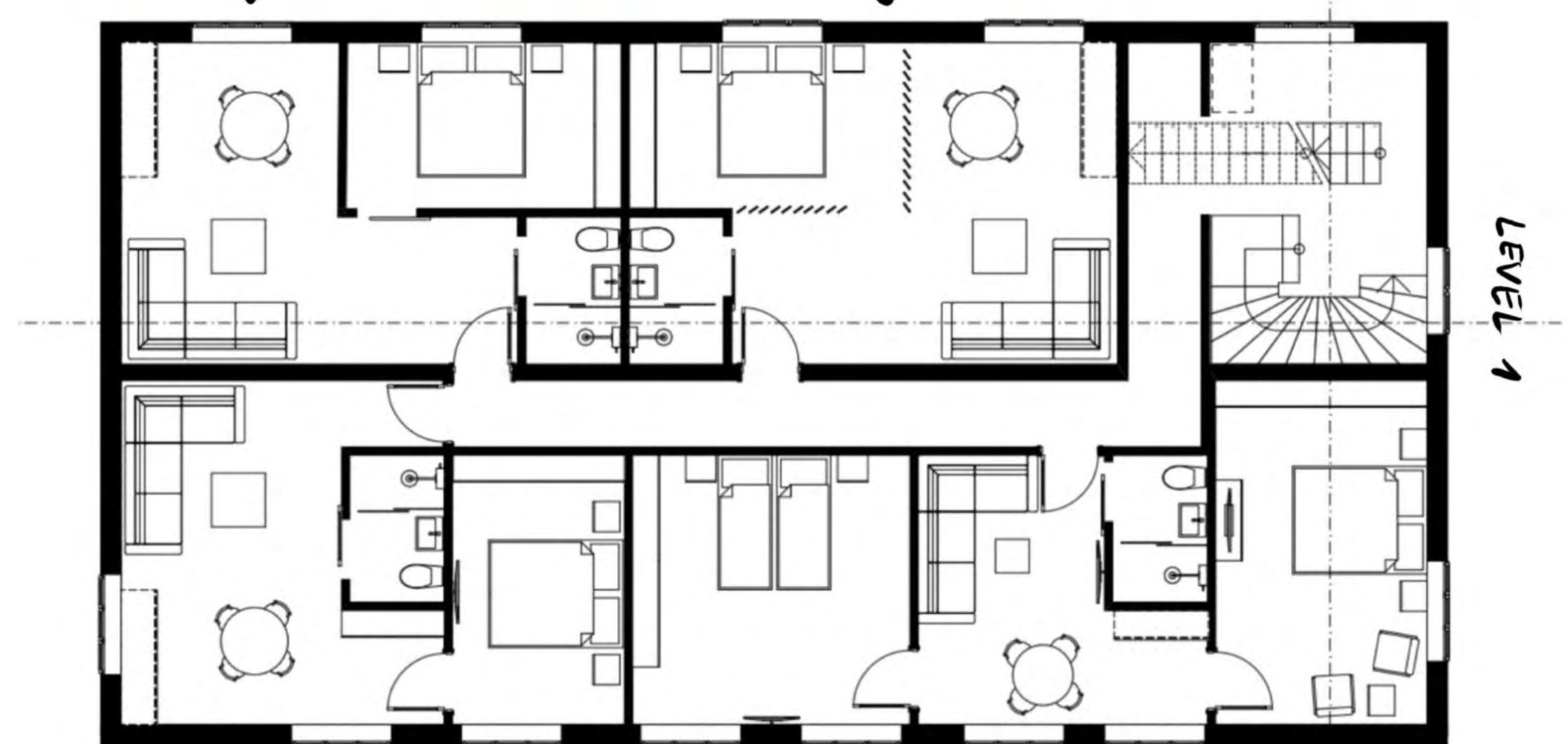
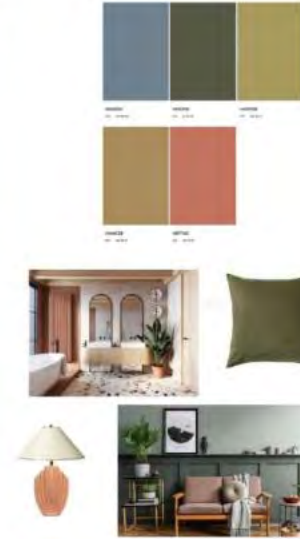
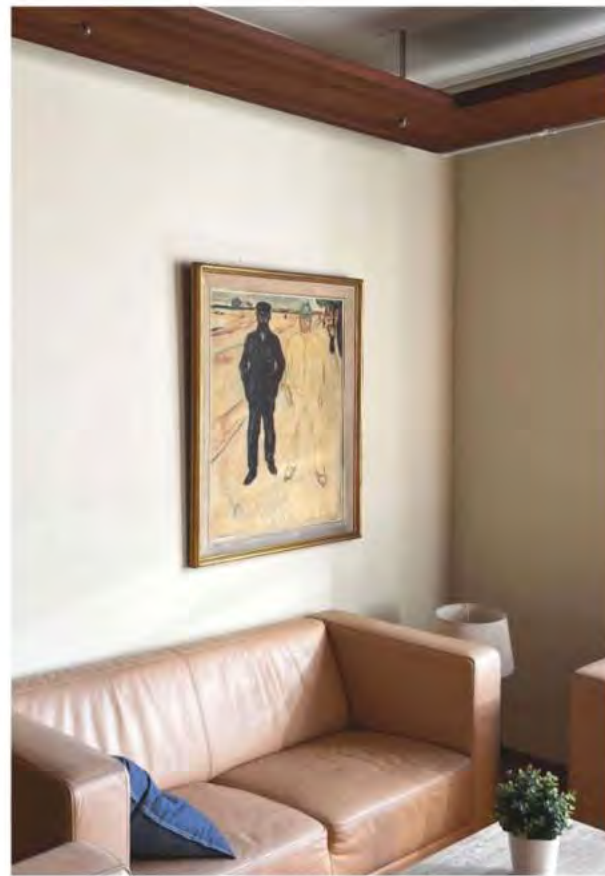
History of Tyssedal  
Hotel and its function as  
the Art Gallery

Recognising the Art  
Pieces as the place's  
identification and one of  
the main values

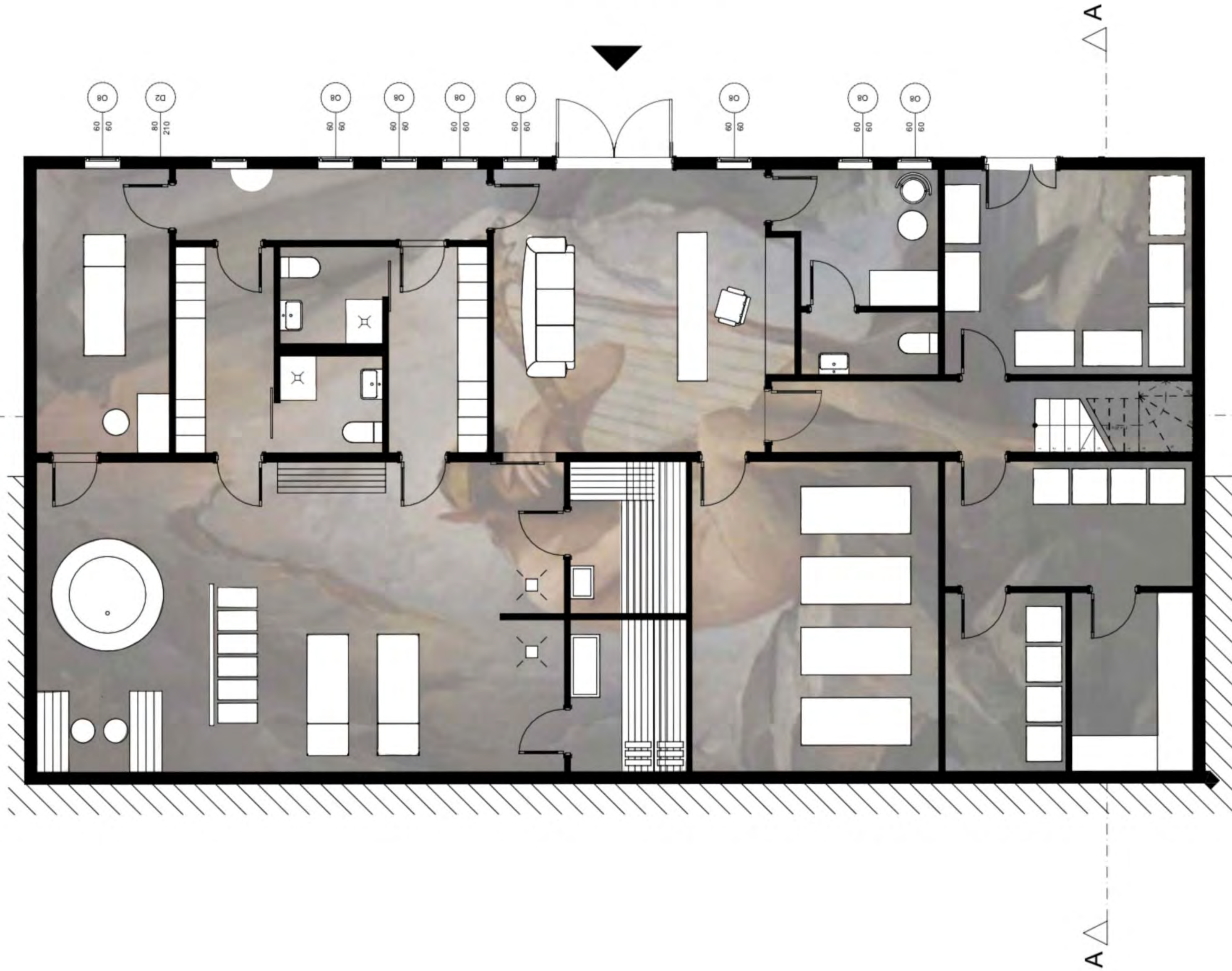
Using the Art as the  
connection between the  
Hotel and the  
Apartments in the old  
shop

# The examples of the paintings and colour palettes in particular apartments

The idea leading to the design is based on the Art Pieces stationing in the Hotel Tyssedal. To show connections between the main building of the hotel and the apartments in the old shop, replicas of the chosen paintings will be the source of colour pallets in apartments. It is planned to name every room with the name of the painting. As the few art pieces are landscapes, using them make a bond between the nature, culture and heritage.



# LEVEL -1



# LEVEL 1



# LEVEL 2

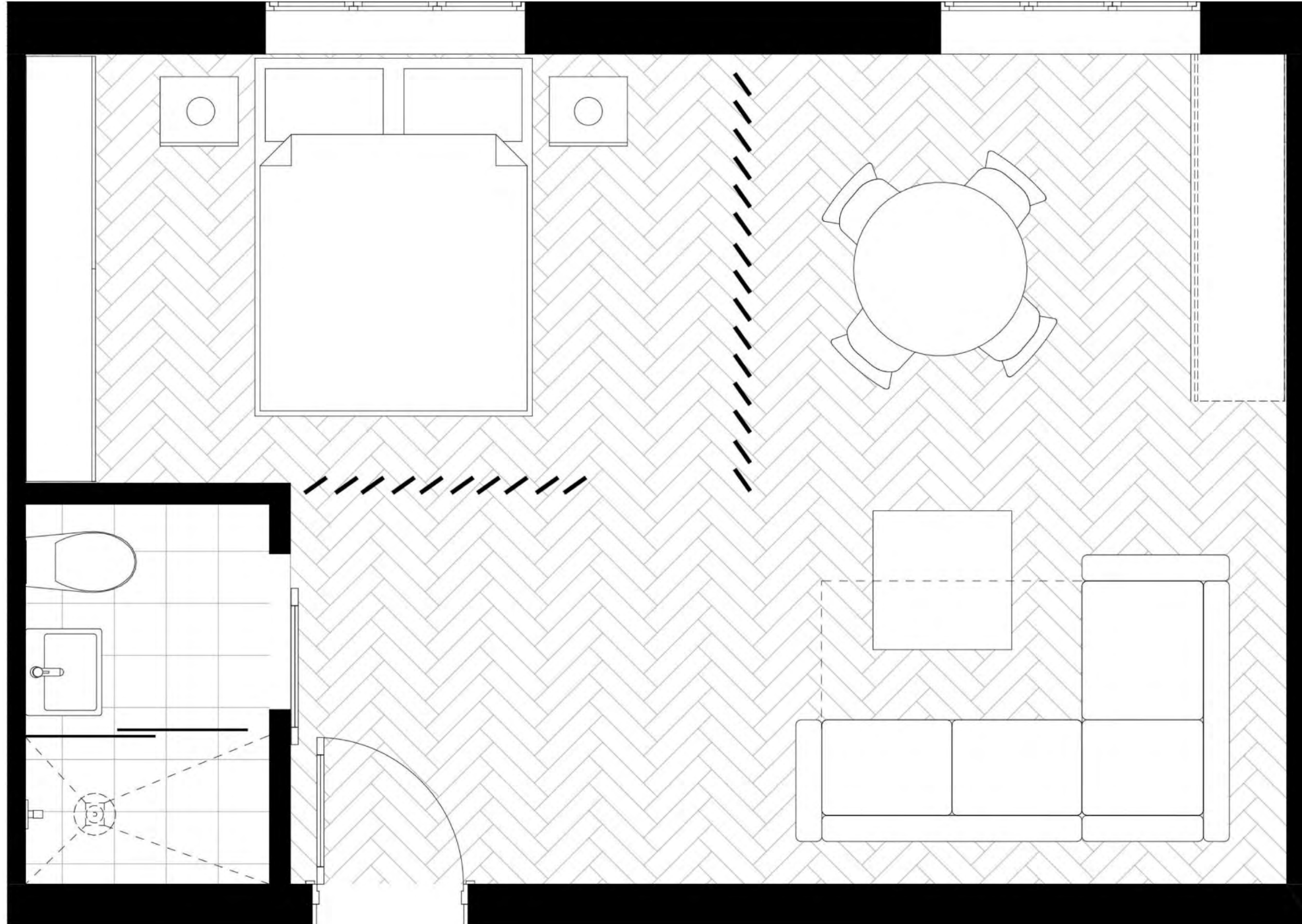


# LEVEL 3





# ROOM PLAN



# CORRIDOR WALL

